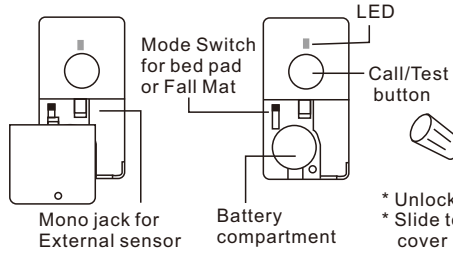
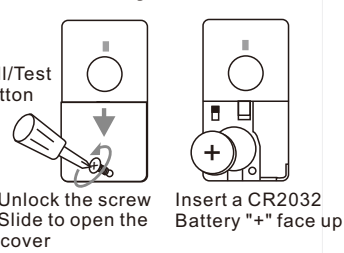


SENSOR PAD TRANSMITTER

Part & Function



Battery Installation



The sensor pad transmitter works with the receiver (chime) and must be paired before using.

Step 1: Insert battery to the sensor.

Step 2: Insert batteries to the receiver (chime).

Step 3: Enter pairing mode for receiver (chime unit).

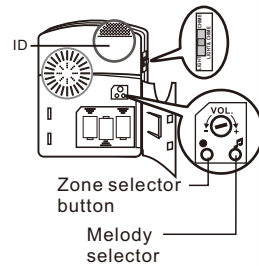
Press and hold the ● zone selector button 3 seconds. The LED #1 will flash.

Step 4: Press the ● button again to move to the zone you want to pair with.

Press 🎵 melody selector to scroll through the melodies. Once you hear your preferred melody, do not press again as it is now selected.

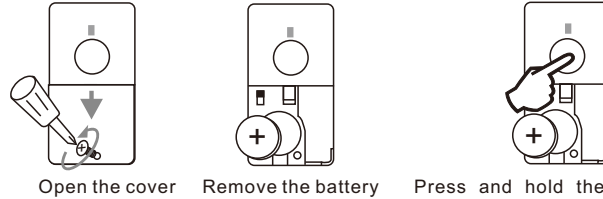
Step 5: Once you have selected the zone and melody, trigger the sensor pad transmitter by press the test button.

If successful, the receiver will generate a short tone. Press the ● button to exit pairing mode, the system is now ready to use.



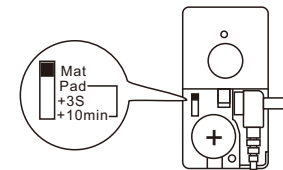
Code Conflict

If the sensor pad transmitter coding is same as another transmitter, you must change the code. When you have changed the code. re-pair the sensor pad transmitter.



Press and hold the test button, insert the battery whilst holding the button for 5 seconds. The LED will flash 5 times when a new code is generated

Setting



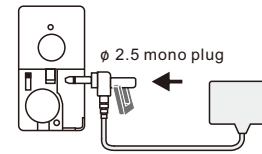
Open the battery cover and slide the switch to pad or mat position

Mat: for fall mat (normal open)
Pad: for Bed pad or chair pad (normal close)
+3S: Pad mode with 3 seconds delay
+10min: Pad mode with 10 minutes delay.

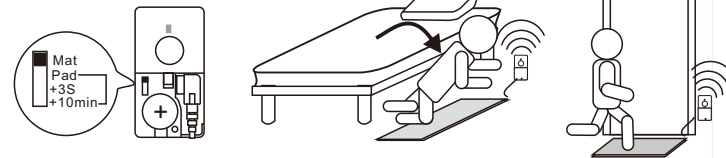
OPERATION

Connection

1. open the battery cover
2. Connect the pressure pad to the transmitter
3. close the battery cover



Mat



The transmitter will send out the alert signal to the receiver, when someone steps on (falls on) the mat

Pad



When the patient has left the mat, the transmitter will send an alert signal to the receiver.

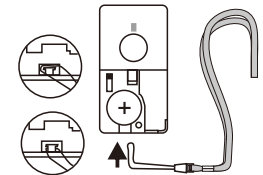
Pad Delay Mode

To prevent false trigger. you can slide the mode switch to Pad + 3S or Pad + 10min position. When the sensor is triggered, The timer will start. When the timer is over, the sensor will send the alert signal to ring the receiver. Pressing the Call/Test button once will stop the timer after trigger. This means the sensor will return to standby mode and does not ring the receiver.

** The sensor pad transmitter can be connected to other type of sensor such as a switch.

Using as a call button

1. Open the battery cover
2. Push the Lanyard into the gap
3. Pull the Lanyard to hold on the column
4. Close the battery cover



When the person needs help press the call button once.

