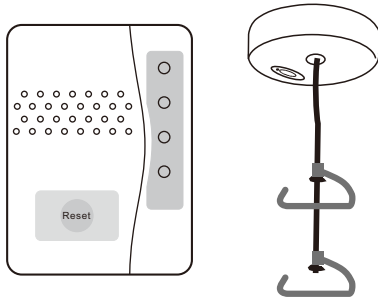


# USER MANUAL



## MAINTENANCE

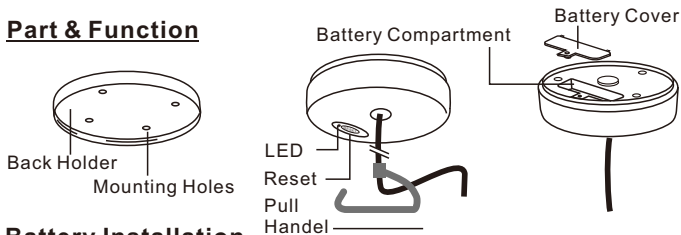
- For best results, use good quality alkaline batteries.
- Always replace old or weak batteries.
- Keep doorbell dry. If wet, dry immediately.
- Do not use cleaning solvents on electronic products.
- Solvents contain chemicals that can damage circuitry. Use damp towel or cloth to clean. Dry immediately.
- Do not expose the bell unit to rain or immerse in water. It is not water resistant.

## WARNING

The manufacturer is not responsible for any radio or TV interference caused by unauthorized modifications to this equipment.

# Wireless Emergency Pull Station Transmitter

## Part & Function



## Battery Installation



## CODE MATCHING & TUNE SELECTION

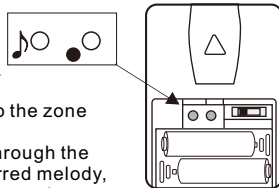
Step 1: Insert batteries to the transmitter to be used e. g. door bell.

Step 2: Insert batteries to the receiver to be used (chime unit).

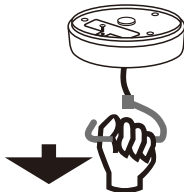
Step 3: Enter pairing mode for receiver (pager unit). Press and hold the zone select button ● for 3 seconds. The LED #1 will flash.

Step 4: Press the ● button again to move to the zone you wish to pair with. Press 🎵 melody selector to scroll through the melodies. Once you hear your preferred melody, do not press 🎵 again as it is now selected.

Step 5: Once the zone and melody are selected with the zone icon flashing, trigger the transmitter once to pair. If successful, the receiver (pager) will generate a short tone. Press the ● button to exit pairing mode, the system is ready to use.

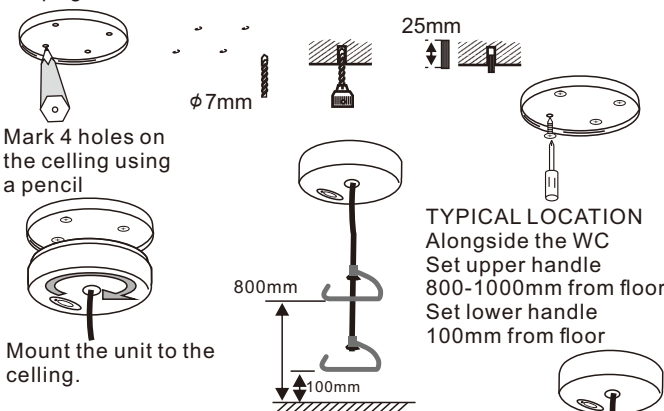


To stop the Vibrating Pager whilst it is alerting press the reset button



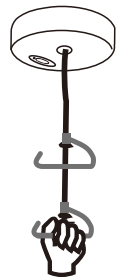
## Installation

Requires an electric drill for holes to fix the Sensor with the provided ram plug and screws.



## Test the Sensor

Pull the handle to test the toilet pull after installation. The LED on the toilet pull will lit up 1.2 second to indicate it is transmitting. The unit will keep transmission every 1.3 seconds until release the handle.



## FCC Statement:

This equipment has been tested and found to comply with the limits for a Class B digital device, pursuant to part 15 of the FCC Rules. These limits are designed to provide reasonable protection against harmful interference in a residential installation. This equipment generates, uses and can radiate radio frequency energy and, if not installed and used in accordance with the instructions, may cause harmful interference to radio communications.

However, there is no guarantee that interference will not occur in a particular installation. If this equipment does cause harmful interference to radio or television reception, which can be determined by turning the equipment off and on, the user is encouraged to try to correct the interference by one or more of the following measures:

- Reorient or relocate the receiving antenna.
- Increase the separation between the equipment and receiver.
- Connect the equipment to an outlet on a circuit different from that to which the receiver is connected.

This device complies with part 15 of the FCC rules. Operation is subject to the following two conditions: (1) This device may not cause harmful interference, and (2) this device must accept any interference received, including interference that may cause undesired operation.

**Note: Modifications to this product will void the user's authority to operate this equipment.**



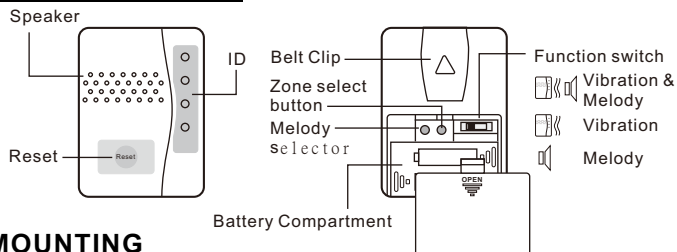
RoHS

R&TTE

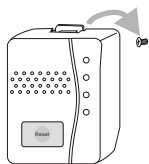


# Portable Vibration Receiver

## PARTS & FUNCTION



## MOUNTING



Hang on the wall

Or

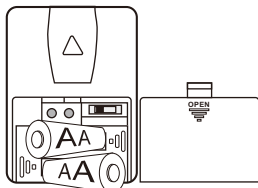


Clip on Belt

## POWER

1. Slide to open the battery cover
2. Insert 2 AA batteries
3. Close the battery cover.

Using 2 x AA size Battery



## CODE MATCHING & TUNE SELECTION

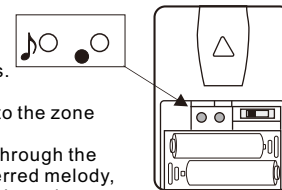
Step 1: Insert batteries to the transmitter to be used e. g. door bell.

Step 2: Insert batteries to the receiver to be used (chime unit).

Step 3: Enter pairing mode for receiver (pager unit). Press and hold the zone select button ● for 3 seconds. The LED #1 will flash.

Step 4: Press the ● button again to move to the zone you wish to pair with. Press the 🎵 melody selector to scroll through the melodies. Once you hear your preferred melody, do not press 🎵 again as it is now selected.

Step 5: Once the zone and melody are selected with the zone icon flashing, trigger the transmitter once to pair. If successful, the receiver (pager) will generate a short tone. Press the ● button to exit pairing mode, the system is ready to use.



To stop the Vibrating Pager whilst it is alerting press the reset button

## Clear the transmitter on the Pager memory

First, press and hold the ● button for 3 seconds to enter the pairing mode. Press the ● button to move to the zone which is to be deleted. Press and hold the 🎵 and ● buttons together for 3 seconds.

The receiver will generate a tone to indicate the transmitter on this zone has been deleted.

## Change the melody in desired zone

First, press and hold the ● button for 3 seconds to enter the pairing mode. Press the ● button to move to the zone then press the 🎵 button to select the melody required. Press the ● button until the pairing mode is exited.

## BATTERY LOW INDICATOR

If a zone LED light is blinking, it indicates that the battery is low for this transmitter. You must replace the battery as soon as possible.

If the Pager beeps every 5 seconds, this indicates the Pager batteries are low. You must replace the batteries of the Pager.

## FCC Statement:

This equipment has been tested and found to comply with the limits for a Class B digital device, pursuant to part 15 of the FCC Rules. These limits are designed to provide reasonable protection against harmful interference in a residential installation. This equipment generates, uses and can radiate radio frequency energy and, if not installed and used in accordance with the instructions, may cause harmful interference to radio communications.

However, there is no guarantee that interference will not occur in a particular installation. If this equipment does cause harmful interference to radio or television reception, which can be determined by turning the equipment off and on, the user is encouraged to try to correct the interference by one or more of the following measures:

- \* Reorient or relocate the receiving antenna.
- \* Increase the separation between the equipment and receiver.
- \* Connect the equipment to an outlet on a circuit different from that to which the receiver is connected.

This device complies with part 15 of the FCC rules. Operation is subject to the following two conditions: (1) This device may not cause harmful interference, and (2) this device must accept any interference received, including interference that may cause undesired operation.

**Note: Modifications to this product will void the user's authority to operate this equipment.**

